



Total Solution Provider in Saw Device

SL06219BV

62.5MHz IF SAW Filter
19.65MHz Bandwidth
Revision 0 : 17. March. 2008



- Electrical Characteristics
 - Package Dimensions
 - Testing Environment
 - Frequency Characteristics
-

SAWNICS Inc.

460 Cheonheung-ri, Seonggeo-eup, Cheonan-si, Chungcheongnam-do, 330-836 / Korea.
Tel: +82 41 550 9372 / Fax: +82 41 550 9399 / www.sawnics.com

□ Electrical Characteristics

Maximum Ratings

| Parameters Description | Unit | Minimum | Typical | Maximum |
|--|-----------------|---------|------------|---------|
| Operating Temperature Range | °C | -20 | - | 70 |
| Storage Temperature Range | °C | -40 | - | 85 |
| Maximum DC Voltage | V | - | - | 10 |
| Maximum Input Power | dBm | - | - | 10 |
| Source Impedance (single ended) ⁽¹⁾ | Ω | - | 50 | - |
| Load Impedance (single ended) ⁽¹⁾ | Ω | - | 50 | - |
| Package type & size | V | | | |
| Length x Width | mm ² | - | 13.3 x 6.5 | - |
| Height | mm | - | - | 1.8 |

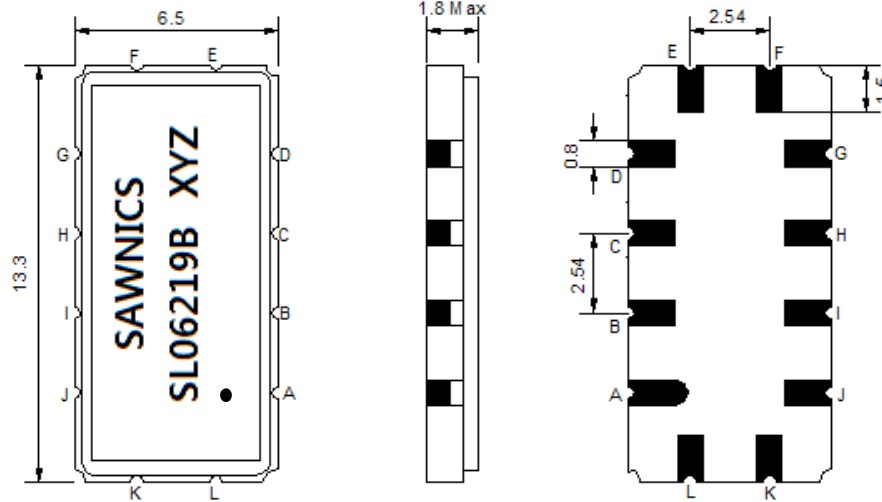
Electrical Specification

| Parameters Description | Unit | Minimum | Typical | Maximum |
|--|-------------------|---------|---------|---------|
| Center Frequency (Fo) | MHz | - | 62.5 | - |
| Insertion Loss at Fo | dB | - | 13.7 | 15.0 |
| Temperature Coefficient | ppm/°C | - | -86 | - |
| Amplitude Ripple within fo ±9.0 MHz | dB _{p-p} | - | 0.45 | 0.80 |
| Group Delay Variation within fo ±9.0 MHz | nsec | - | 35 | 60 |
| Absolute Delay at Fo | µsec | - | 1.12 | - |
| Bandwidth at -1.0 dB | MHz | - | 19.65 | - |
| Bandwidth at -3.0 dB | MHz | 20.10 | 20.27 | - |
| Bandwidth at -40.0 dB | MHz | - | 23.40 | 24.0 |
| Relative Attenuation: | | | | |
| Lower Sidelobe | dB | 45 | 48 | - |
| Upper Sidelobe | dB | 45 | 48 | - |

Notes : (1) With Matching Network (Ref. Testing Environment Circuit as shown below).

Those impedances could be modified with different impedance values and/or structures, if necessary.

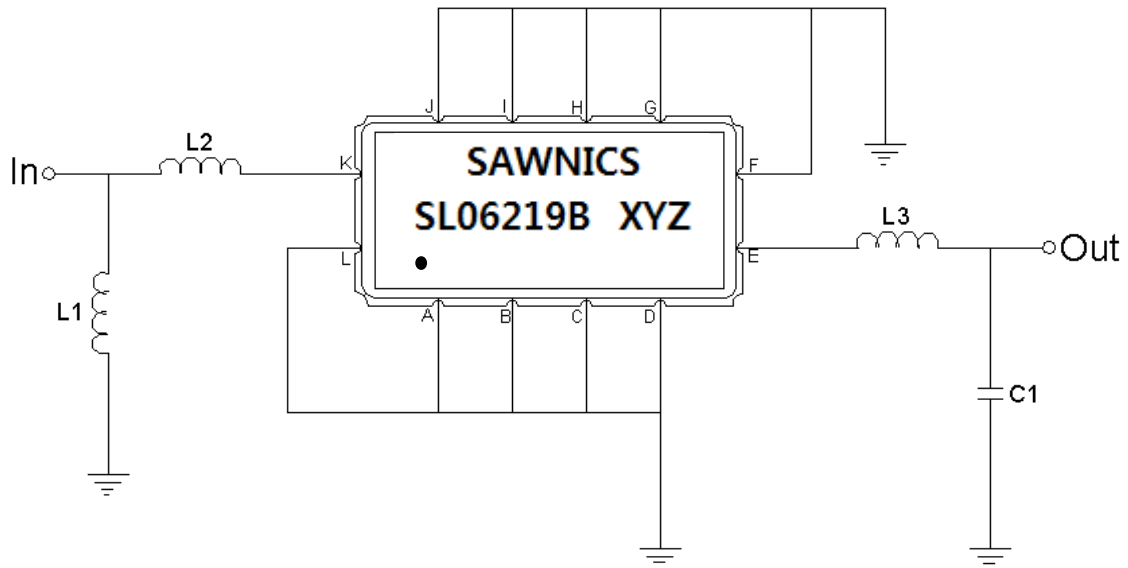
Package Dimensions



- ① SAWNICS: Brand
- ② SL06219B: Model Name
- ③ X : Date Code (Year)
- ④ Y : Date Code (Month)
- ⑤ Z : Date Code (Date)
- : Index Dot

| Pin Description | |
|------------------------------|--------|
| A, B, C, D, F, G, H, I, J, L | Ground |
| K | Input |
| E | Output |

Testing Environment



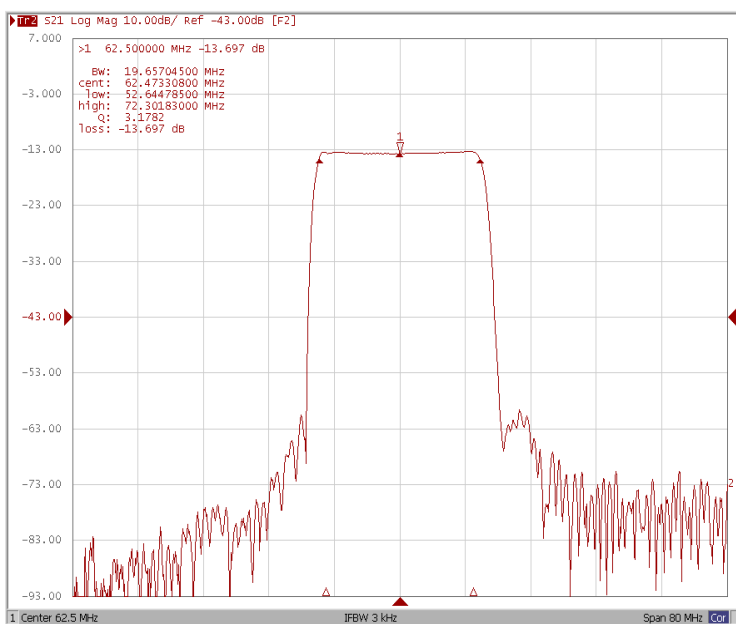
| Test Fixture & Values | |
|-----------------------|--------------------|
| Input | L1=6.8nH , L2=82nH |
| Output | L3=150nH , C1=22pF |
| Source/Load Impedance | 50 Ω |



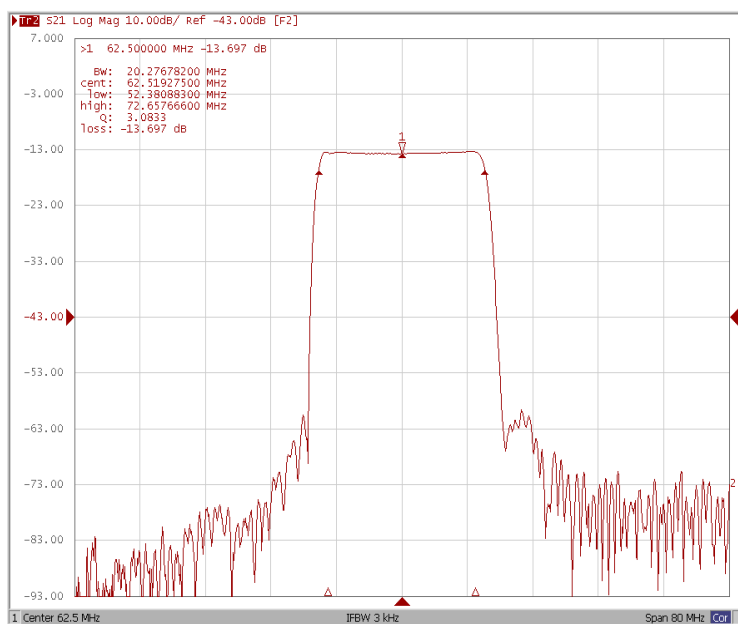
Frequency Characteristics

Frequency Response

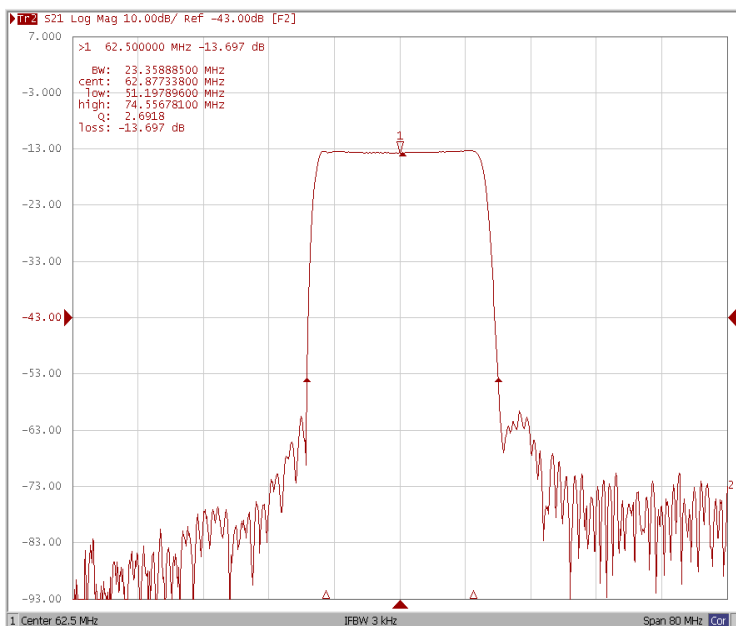
Bandwidth at -1.0 dB



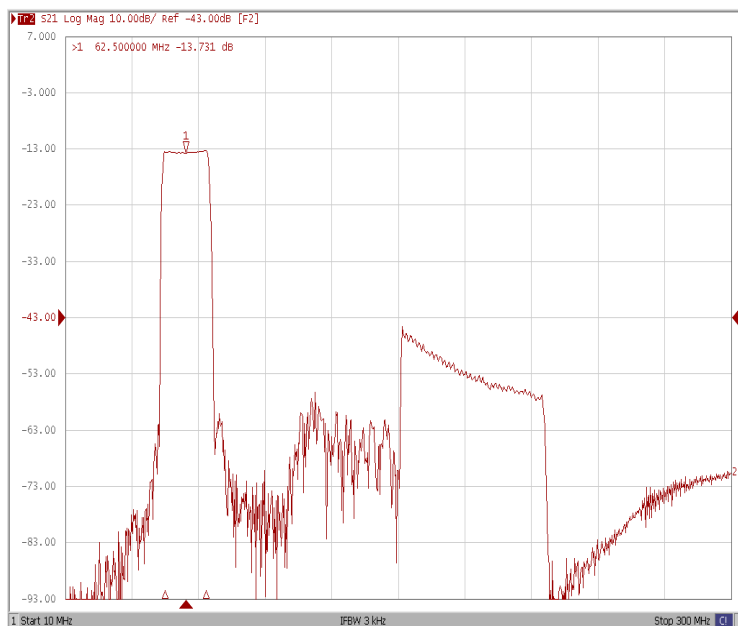
Bandwidth at -3.0 dB



Bandwidth at -40.0 dB



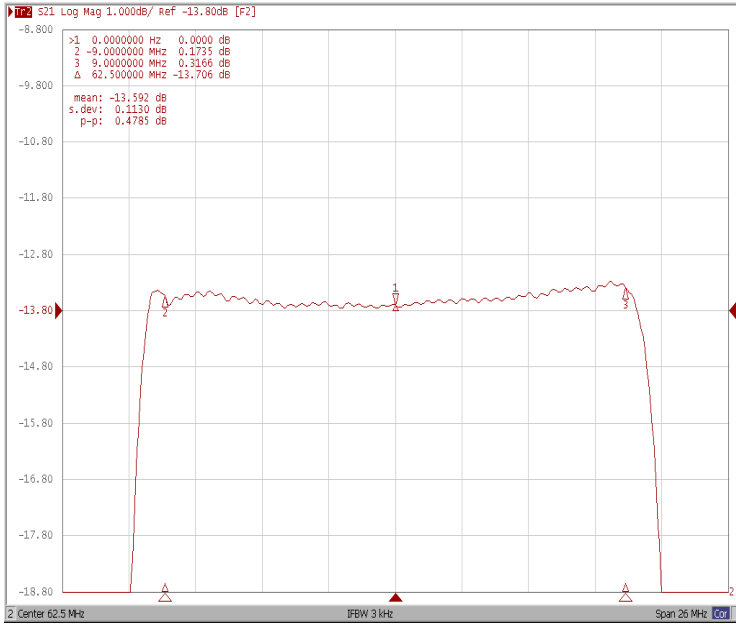
Wide-Band



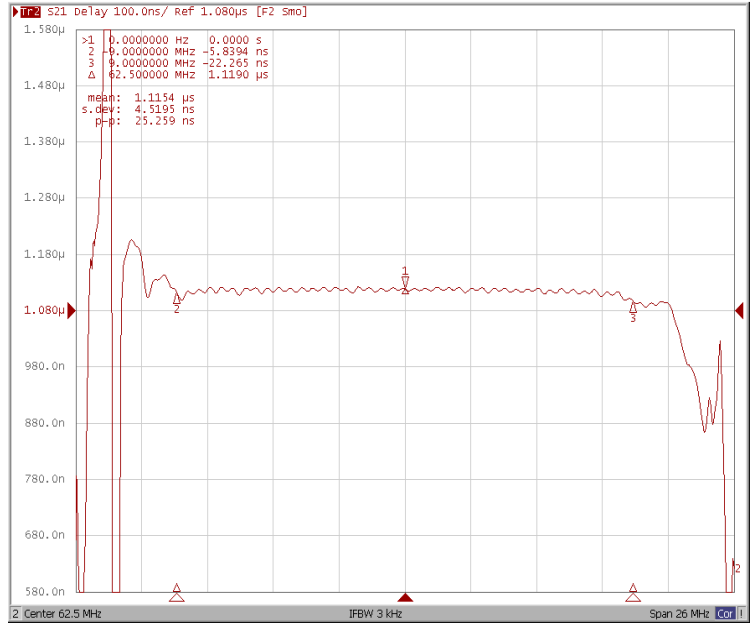
Frequency Characteristics

Frequency Response

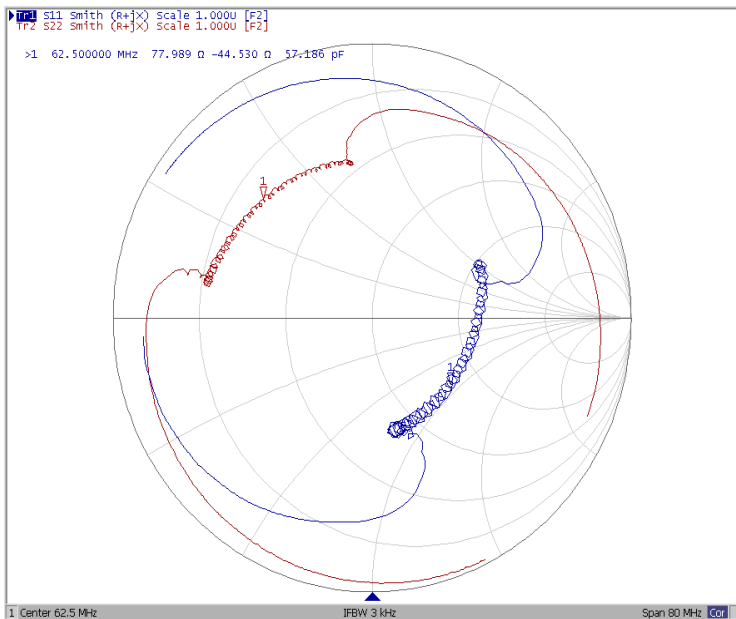
Ripple Variation Fo±9.0MHz



Group Delay Variation Fo±9.0MHz



Smith Chart



SWR

